



your learning management system your way

WorldLearn is a proprietary Learning Management System which is designed, developed and supported in Australia. Based on extensive experience in the management of learning, the WorldLearn team has created a solution to meet the Registered Training Organisation RTOs regulatory compliance needs.

Training Management with
WorldLearn:

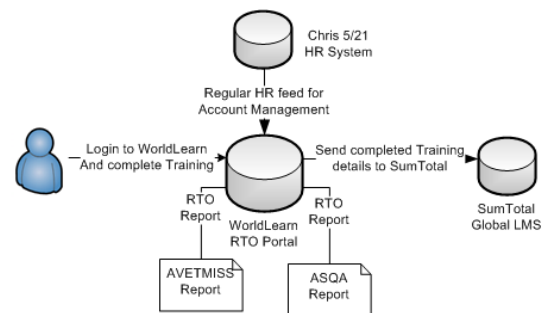
- RTO AVETMISS Compliance
- Qualification Management
- AVETMISS Reporting & Claim
- ASQA Quality Indicator Report



Systems Integration

WorldLearn can interface the LMS with various other corporate data sources including flat file, web-services and data link. We provide a range of data integration methods including open API for our major clients that pushes personnel data to the LMS data and in reverse provides training record data to the appropriate system. WorldLearn system currently works with many HRIS on the market, including Oracle, SAP, PeopleSoft, Aurion, Chris5, Chris21, Genesis, amongst many others.

There are a number of ways of moving employee data and relationships from HR system into the WorldLearn solution that include flat file, WorldLearn Connect, web services and database-to-database.



Flat File integration

WorldLearn can provide a simple to use interface that walks you through the process of importing lists of users and attributes from prepared text files.

WorldLearn Connect

This utility completely automates the transfer of employee information from your HR into the User Portal of the WorldLearn system, eliminating the need to perform manual export and import tasks. This straightforward utility runs as a Service. Once configured, it runs unattended, on a schedule WorldLearn Connect can be configured to run as often as every day, or as infrequently as once per week.

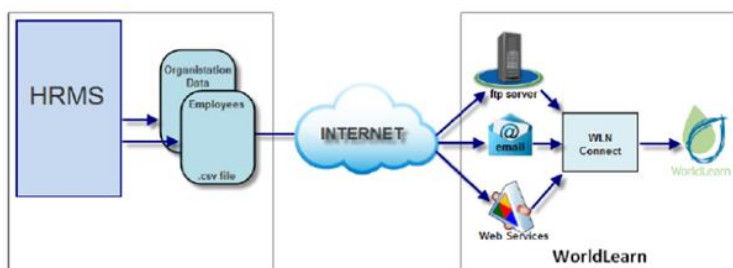
Web Services for HR Integration

WorldLearn web services let the client create their own interface from their HR to the WorldLearn system. It includes all methods required to insert, update, delete and retrieve user information

WorldLearn Connect Overview

We recommend Flat file/WorldLearn integration method. In the Flat file based integration method, a job will be scheduled in the HR system to run a report of all current users and send it to WorldLearn data.learning@worldlearn.com.au on weekly basis. WorldLearn connect will review the schema of the file for any description, run the backup of the LMS database and update the data in the LMS based on the agreed key values (email address or Employee ID). The system will use agreed rules such as; if employee data does not exist in the latest file then change the employee status in the system as non-active; if employee data exists in file but not in LMS then create the record in the LMS and send the welcome email with a temporary password to employee; if employee data exists both in the latest file and system then update any changed data files in the LMS record. The system maintains a full audit log of all the changes on which record was updated when and by whom for audit purpose.

Once the process is complete, the system sends a summary email to the client and WorldLearn teams with total number of records in the file, number of records marked inactive in LMS, number of records update in LMS, number of records added in LMS and any rejection data details.



Expert

Our team has extensive expertise in developing and implementing successful corporate eLearning solutions focused on world class content and learning management system technologies. WorldLearn has invested in assembling the best eLearning and Performance team dedicated to client excellence.

The team is the highest skilled and client dedicated in the eLearning industry with a client list that speaks for itself. WorldLearn invests in its people and that dedication transfers to the client, prompting excellence in all phases of the partnership.

Phone +61 (0)8 8419 4900

Fax +61 (0)8 8232 3225

sales@worldlearn.com.au

www.worldlearn.com.au

Level 6, 97 Pirie street

Adelaide, 5000

South Australia

